

LOCATION: 819 30th Ave S. Moorhead

SUITE: 104B

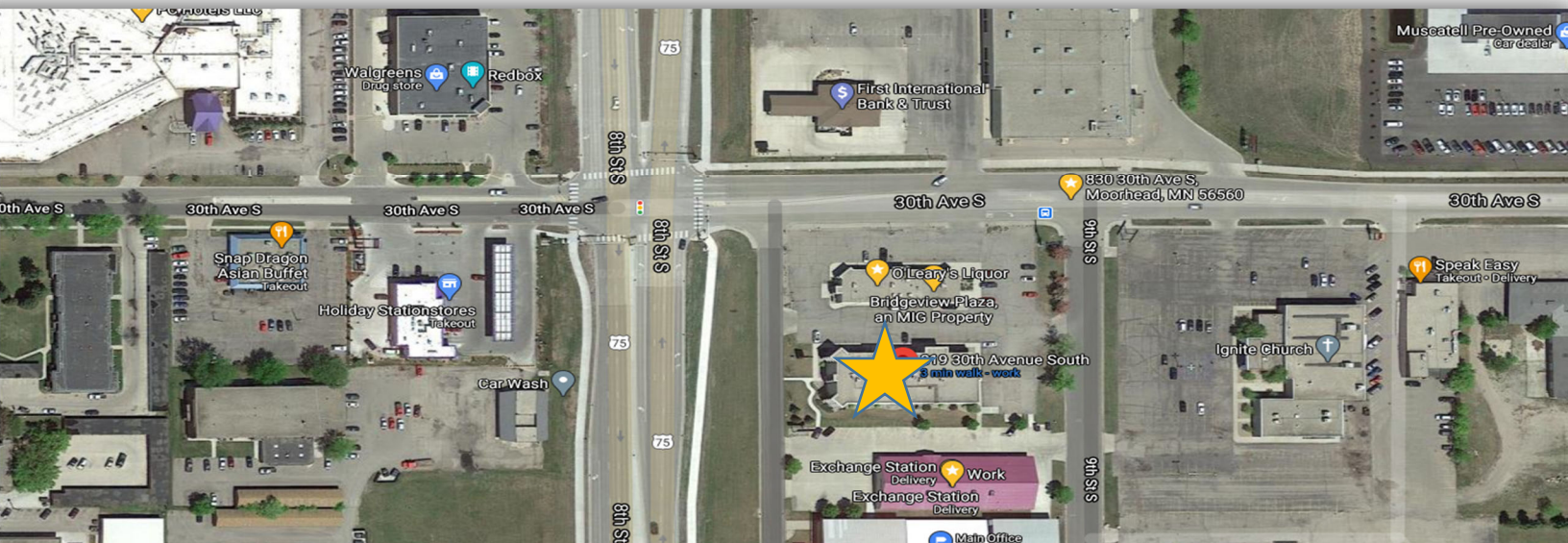
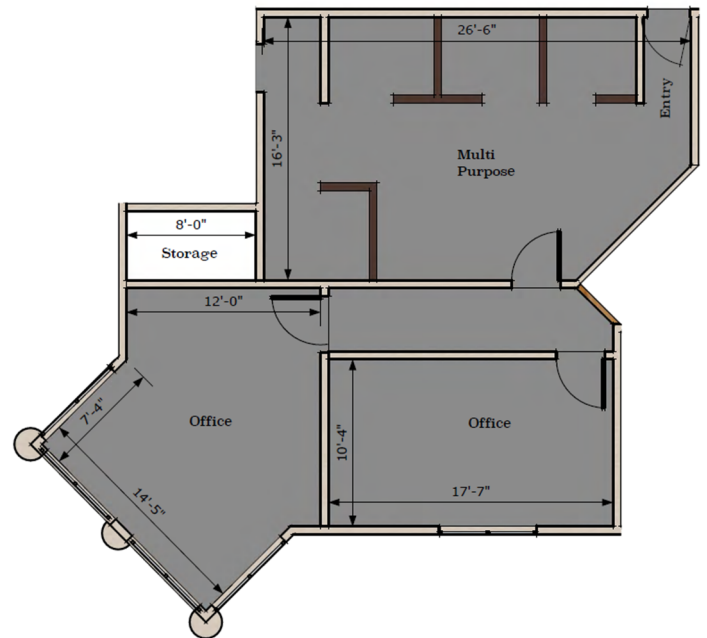
USE: Commercial Office Space

SIZE: 1150 sf

RATE: \$18.26/sf - \$1750/month

AMENITIES NEARBY: Subway, DQ, Asian Buffet, CVS, Holiday Station Store, Doggy Depot.

DETAILS: Great Location with Easy Access to I-94. Visibility from 8th St. South. Private Entry into Suite. Private Parking Lot and Street Parking available. CAM Included. 1 Phoneline & Internet Included.



Office: 3100 8th Street S Moorhead MN 56560

Ken Martin Ken@MIGProperties.com 701.371.4484

