

LOCATION: 1410 23rd St. S. Moorhead

SUITE: Cold Storage

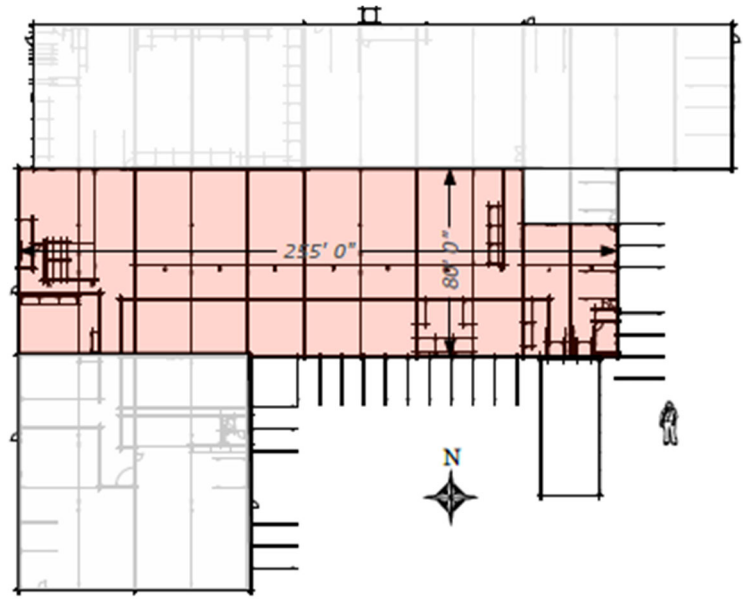
USE: Palletized Storage

SIZE: 19343 sf

RATE: \$per pallet pricing, call for details.

AMENITIES NEARBY: Located in the Industrial Park North of Menards. Easy access into Park from 12th Ave S.

DETAILS: Loading Docks, Forklift and Assistance, Pallets Available, Racking Available, Drive in Access.



Office: 3100 8th Street S Moorhead MN 56560

Ken Martin Ken@MIGProperties.com 701.371.4484

