



M.I.G. CIP6C
1410 23rd St. South
Moorhead, MN 56560



Heated Storage



Warehousing Services



Cold Storage



M.I.G. CIP6D

M.I.G. CIP6E M.I.G. CIP6F

M.I.G. CIP6C
1410 23rd St. South
Moorhead, MN 56560

M.I.G. CIP6B1

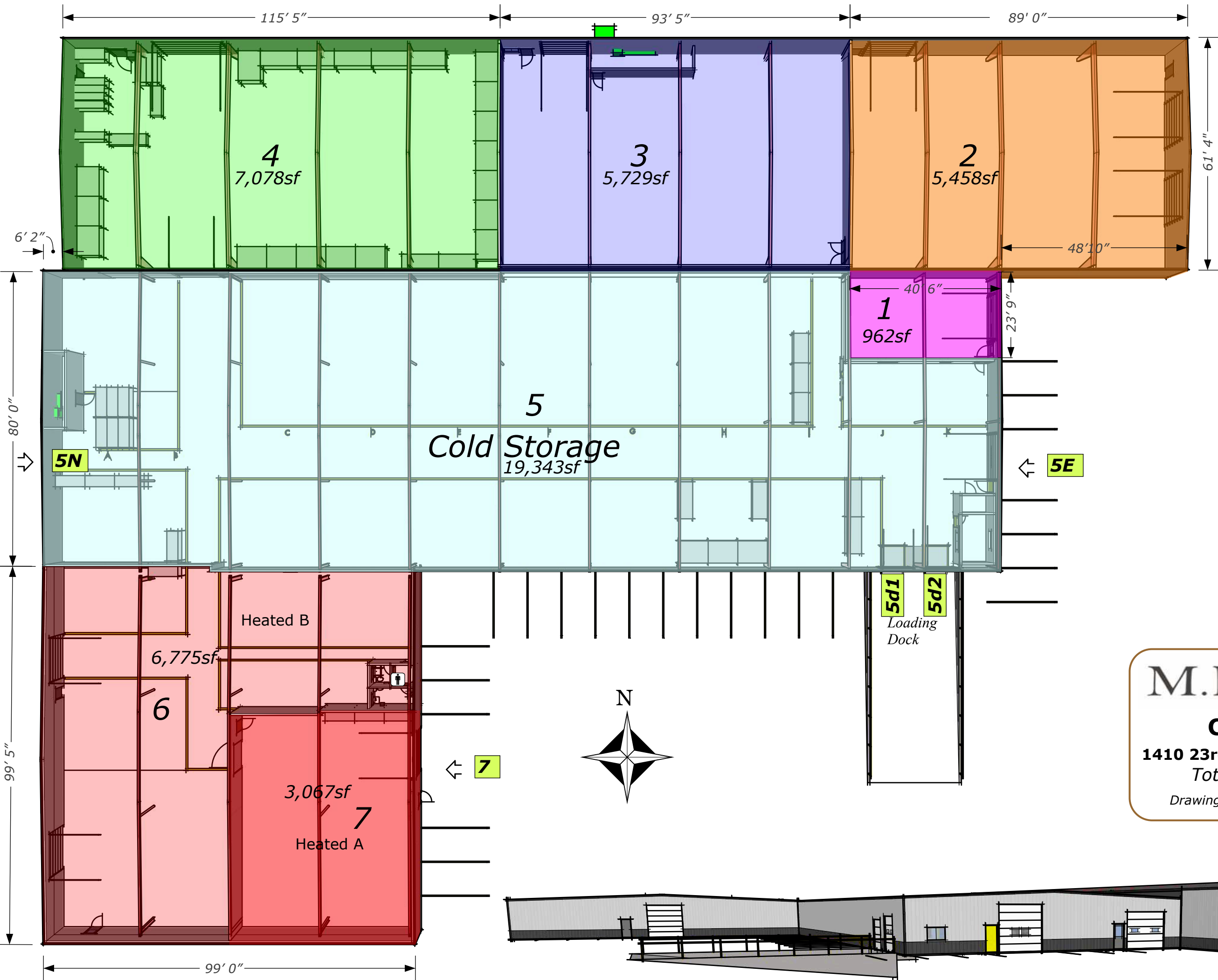
M.I.G. CIP6A1

24th St S.

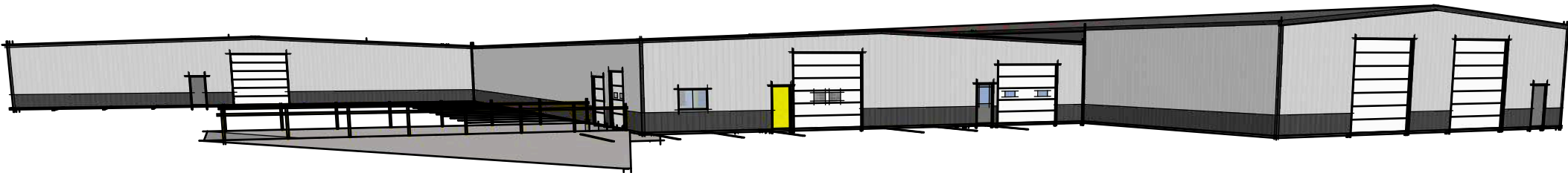
M.I.G. CIP6B2

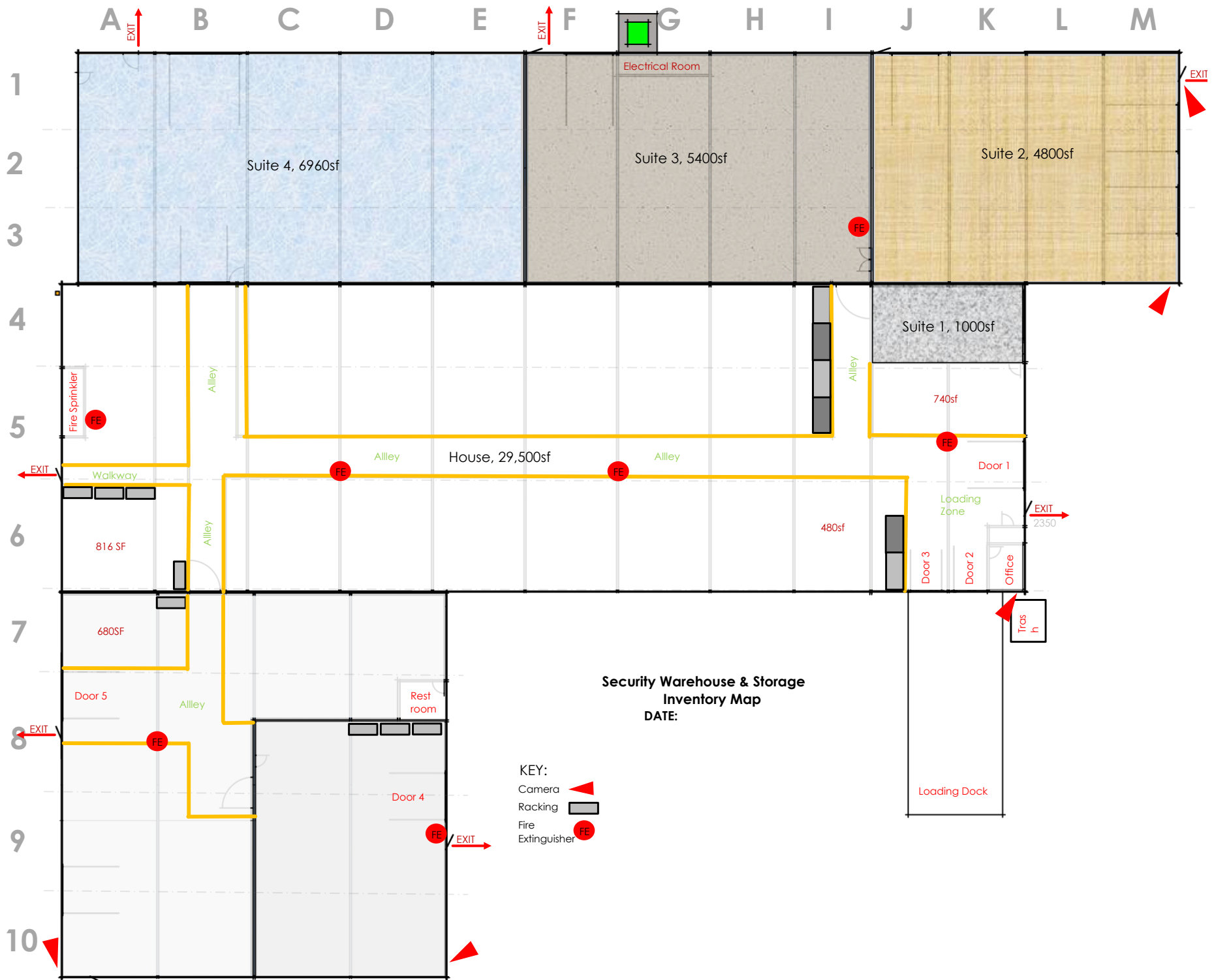
23rd St S.

12th Ave S.

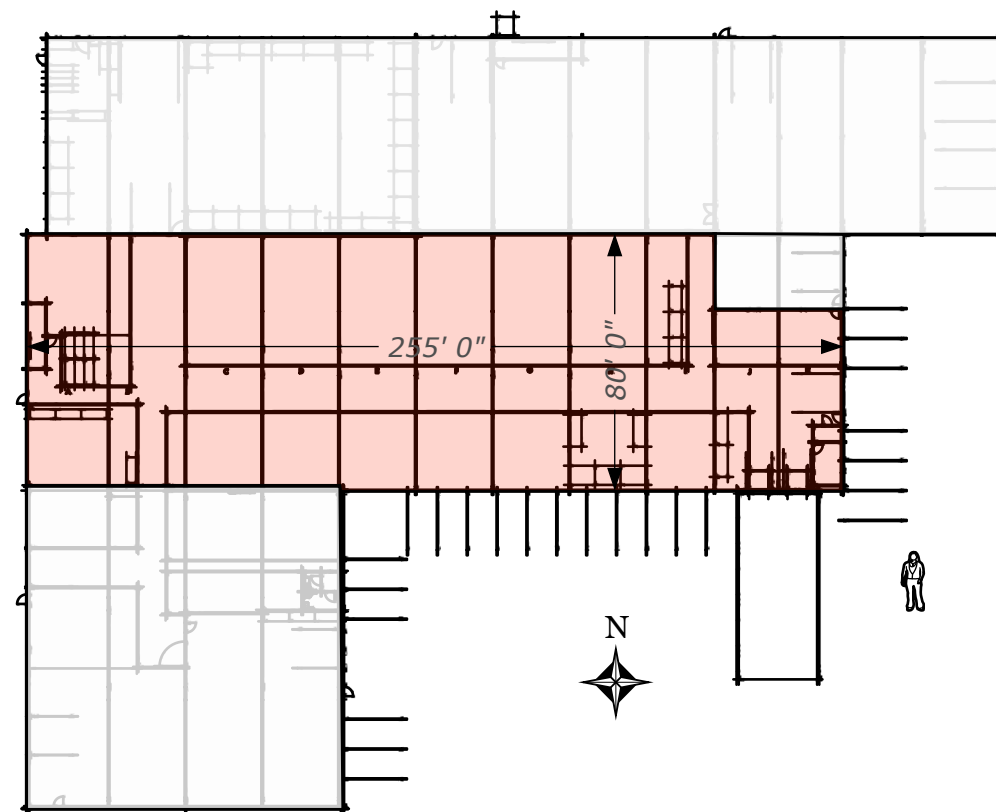
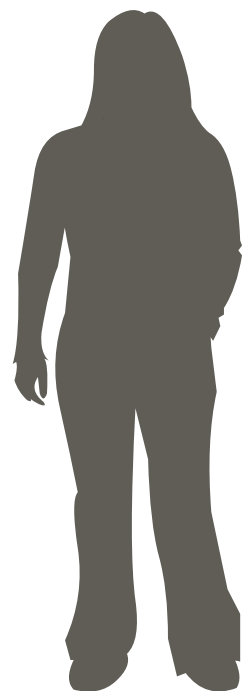
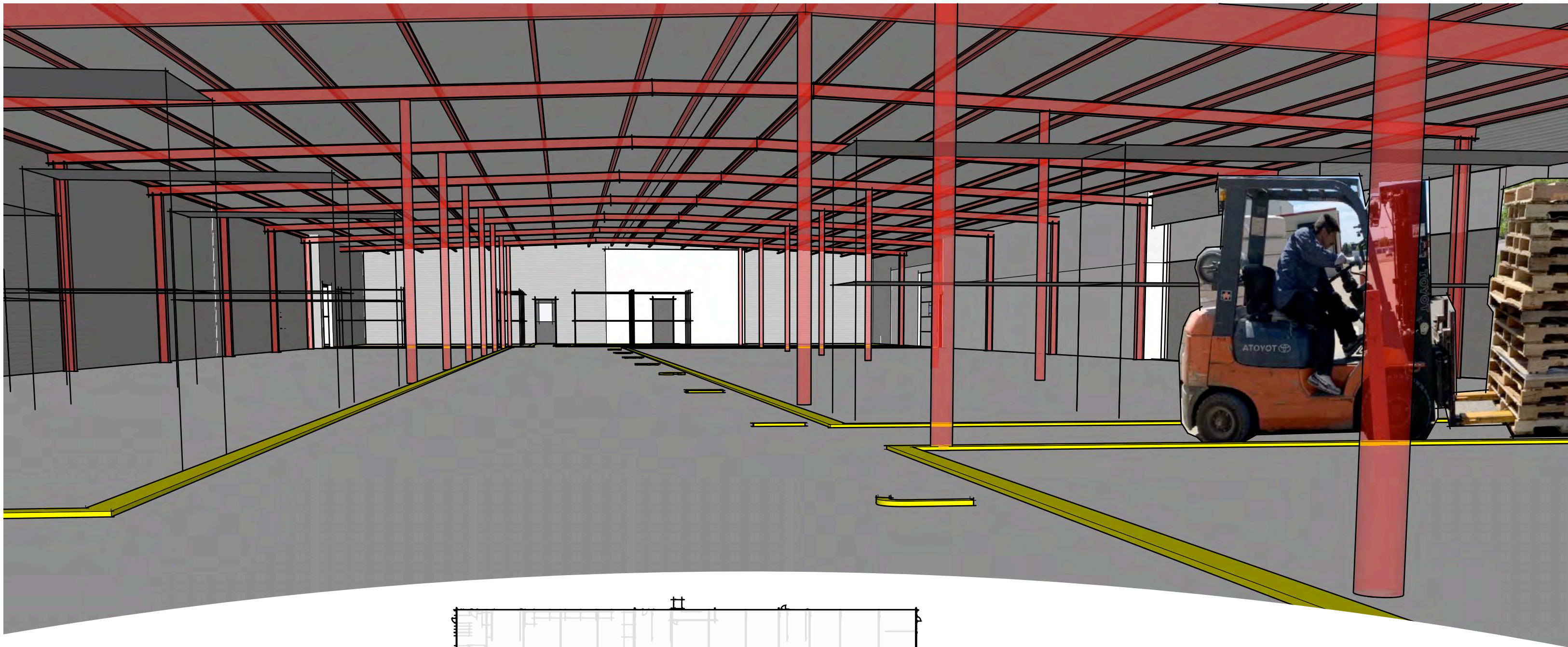


M.I.G. Properties
CIP6C
 1410 23rd St. S, Moorhead
 Total 48,412
 Drawing Updated 2019-0927

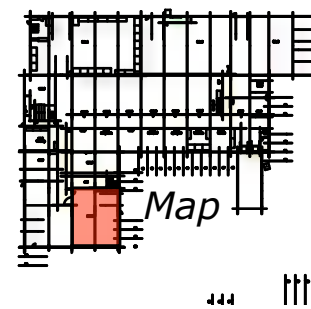
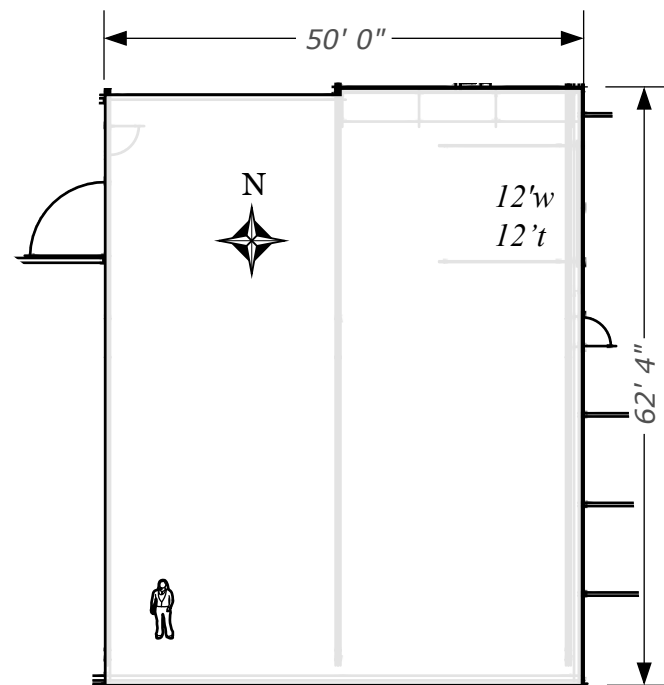
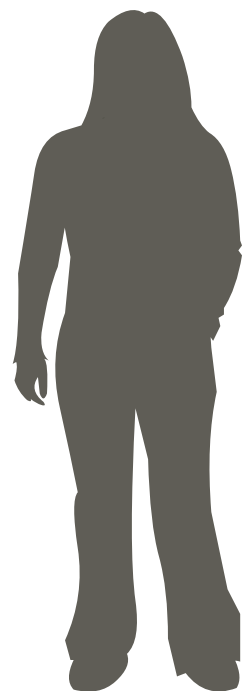
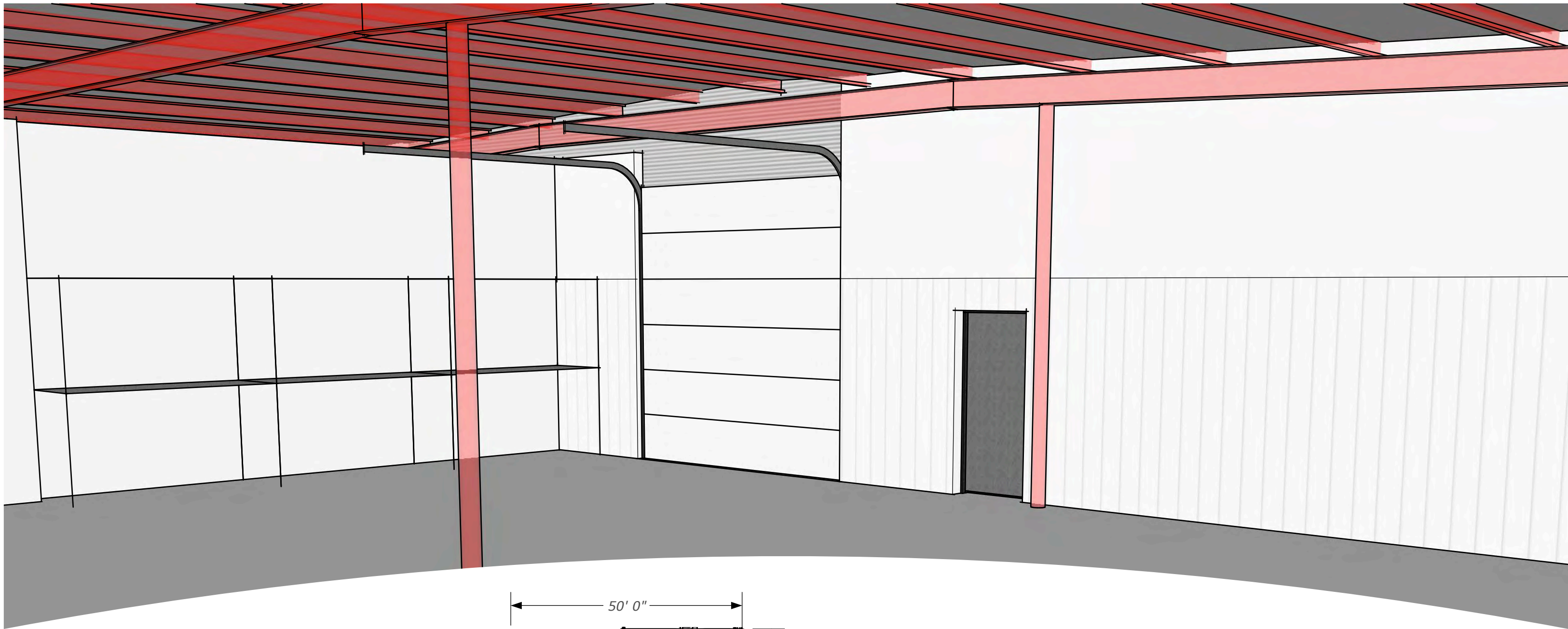




**Security Warehouse & Storage
Inventory Map**
DATE:



M.I.G. Properties
CIP6C Cold Storage
1410 23rd St. S, Moorhead
Total 26,062sf
Drawing Updated 2018-0917



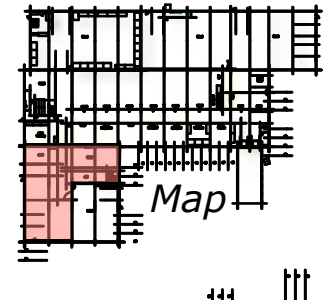
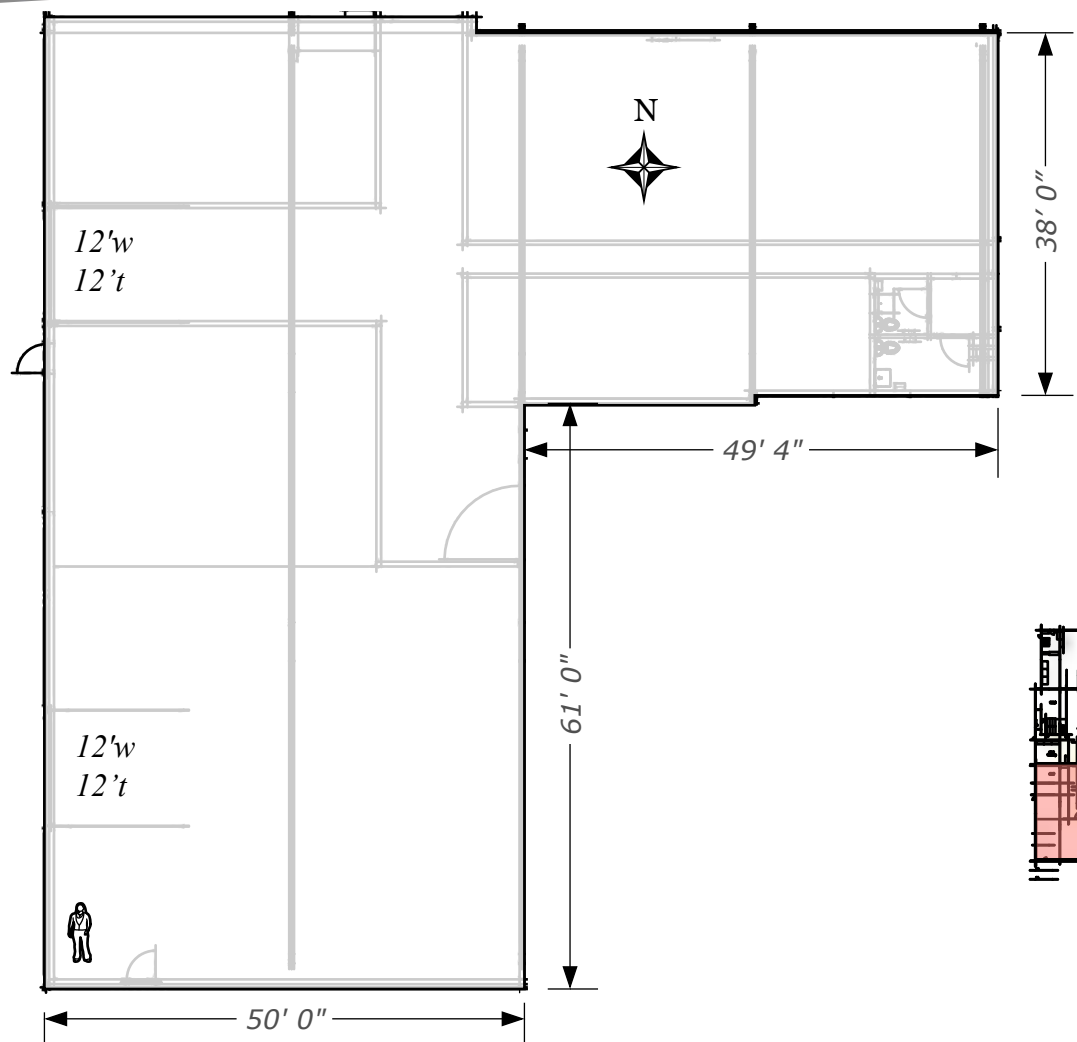
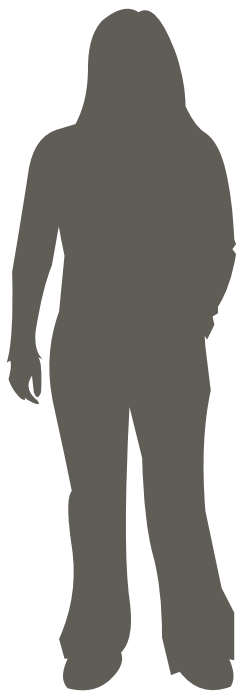
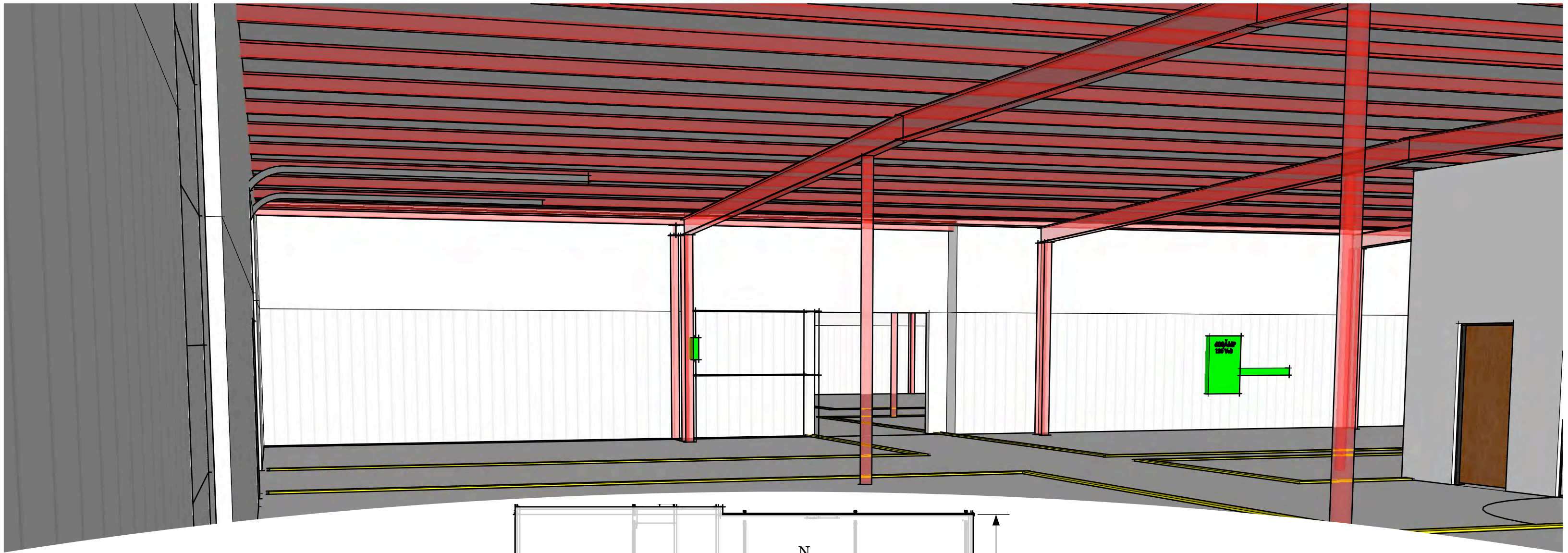
M.I.G. Properties

CIP6C Heated A

1410 23rd St. S, Moorhead

Total 3,067sf

Drawing Updated 2019-1001



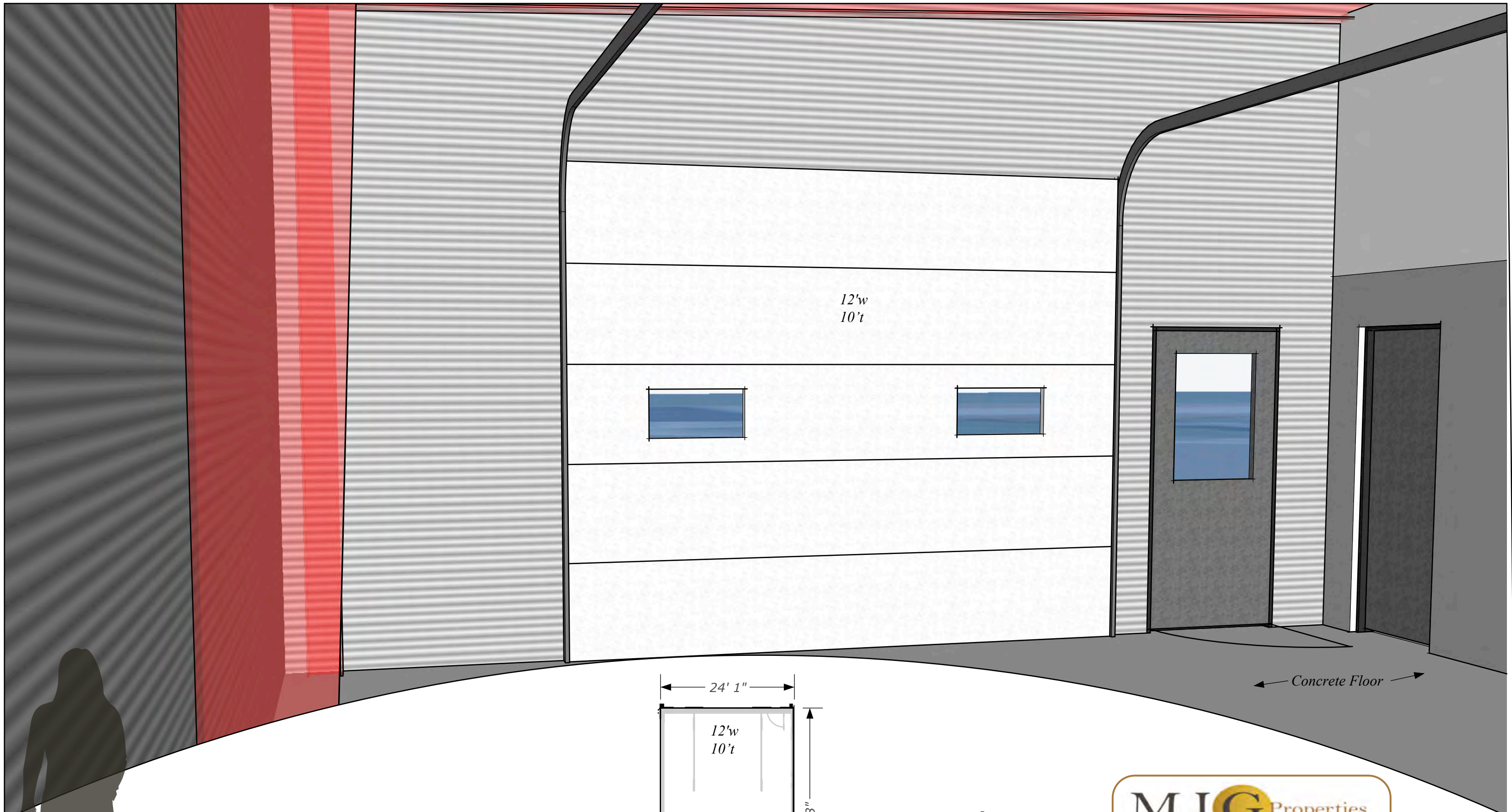
M.I.G. Properties

CIP6C Heated B

1410 23rd St. S, Moorhead

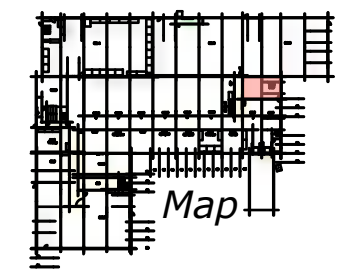
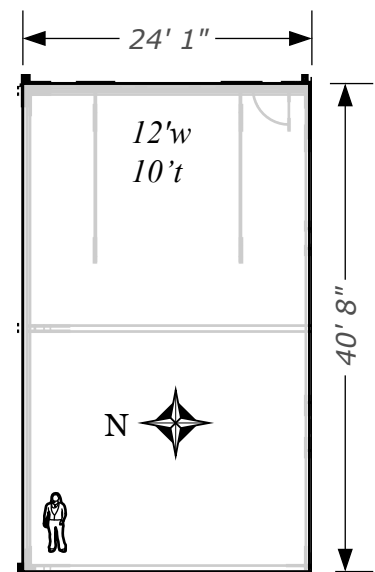
Total 6,775sf

Drawing Updated 2019-1001



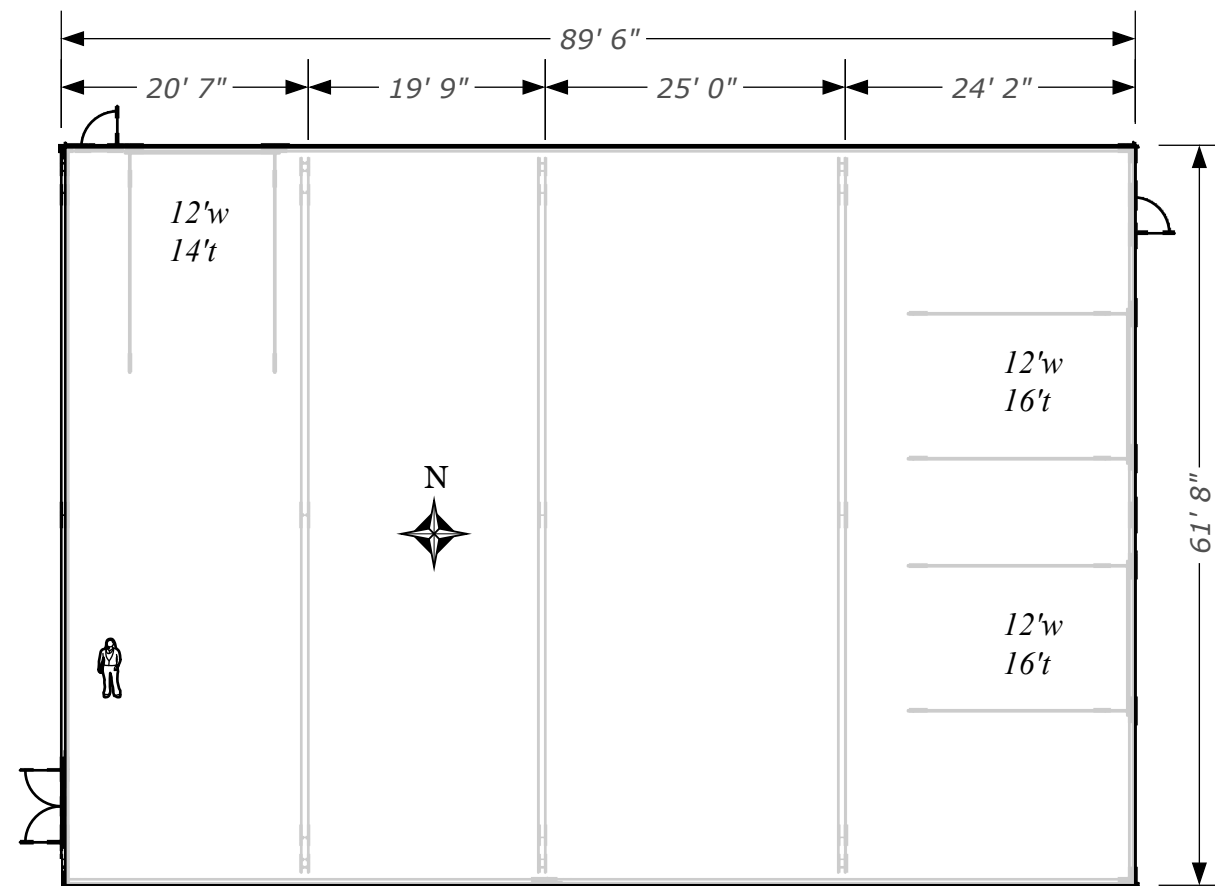
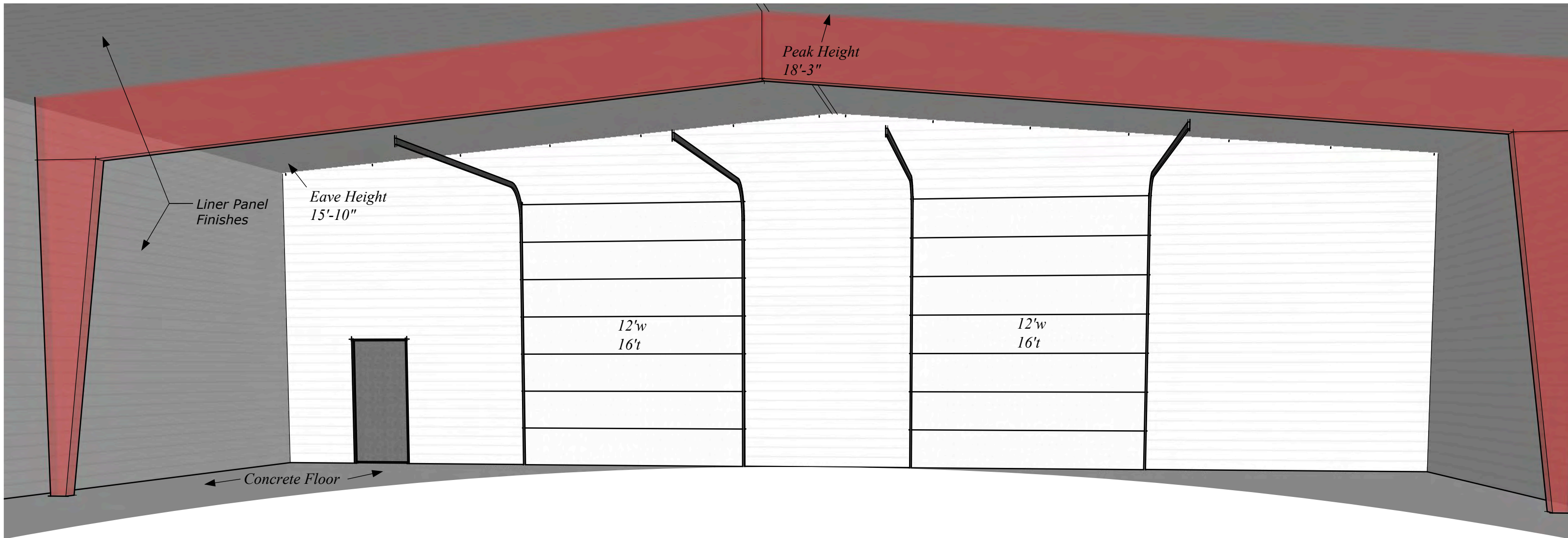
12'w
10't

← Concrete Floor →



Map

M.I.G. Properties
CIP6C Shop 1
1410 23rd St. S, Moorhead
Total 962sf
Drawing Updated 2019-1001



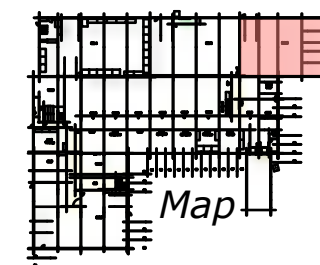
M.I.G. Properties

CIP6C Shop 2

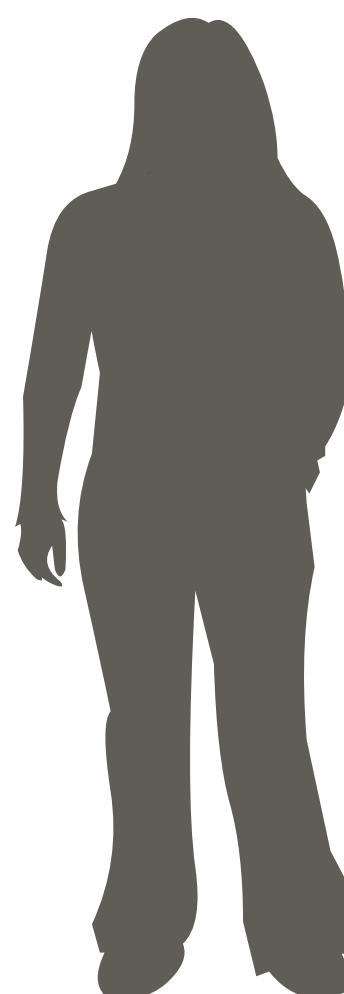
1410 23rd St. S, Moorhead

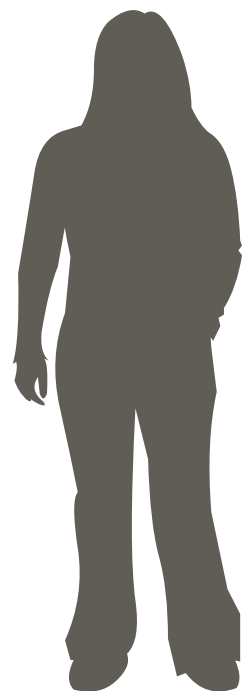
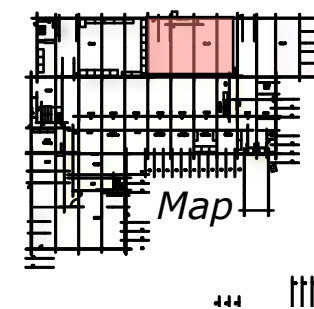
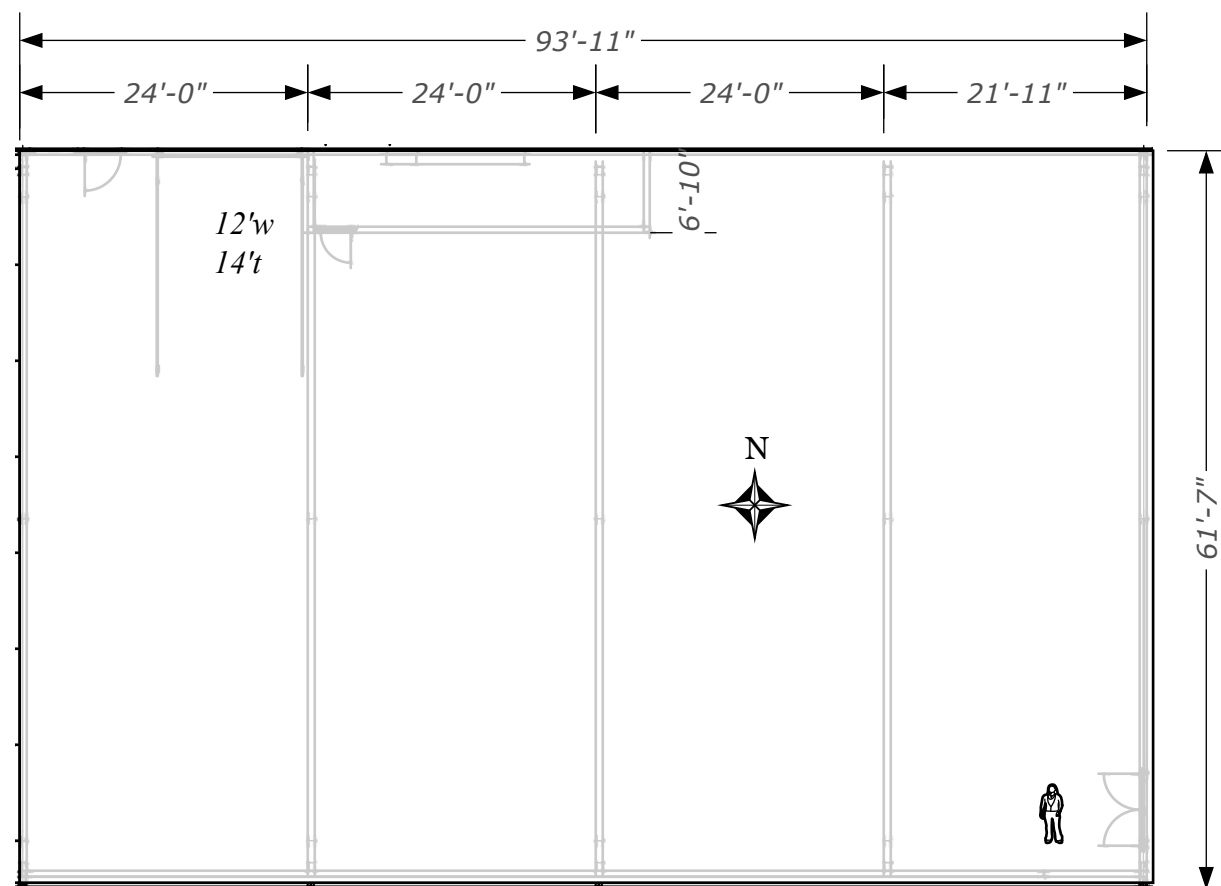
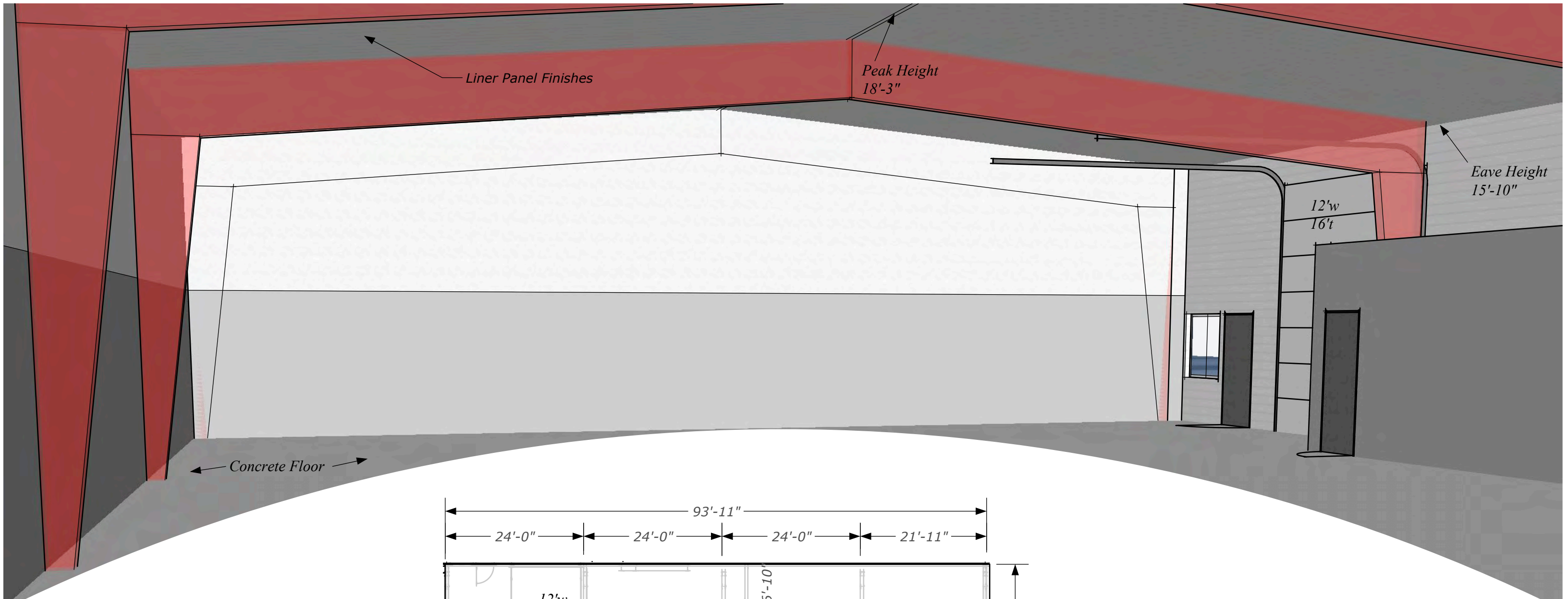
Total 5,458sf

Drawing Updated 2019-1001



444





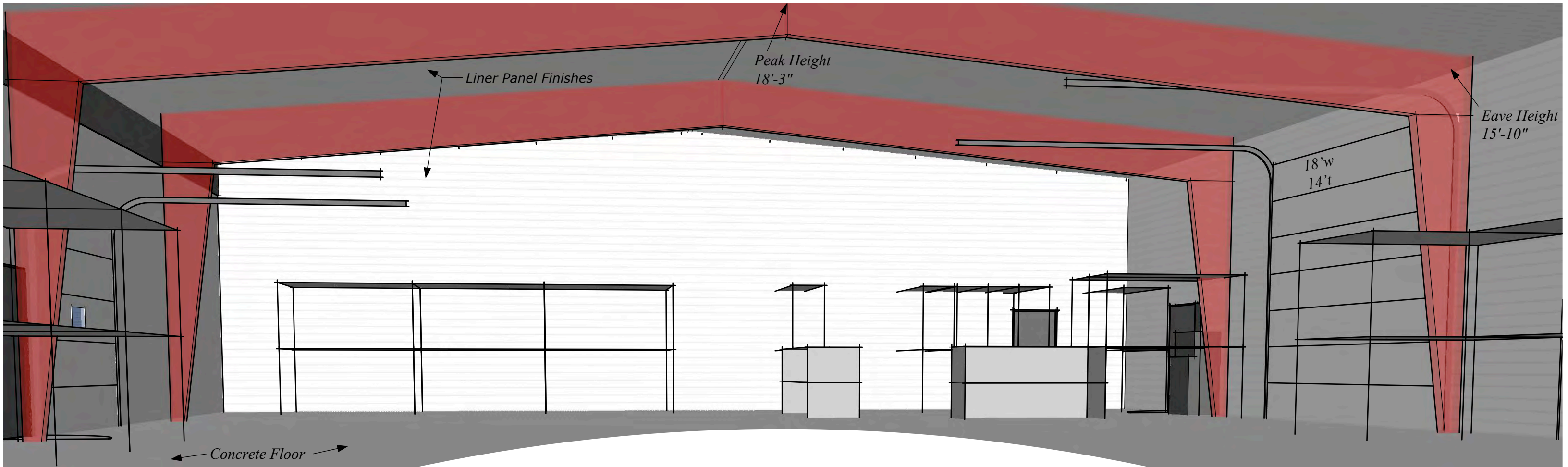
M.I.G. Properties

CIP6C Shop 3

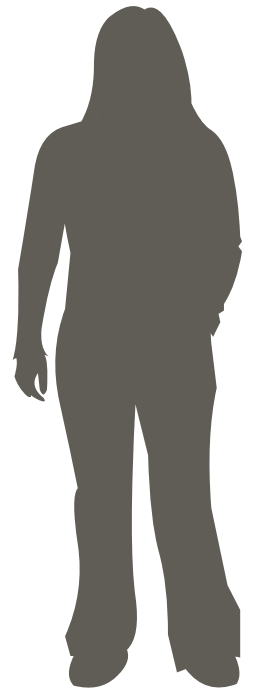
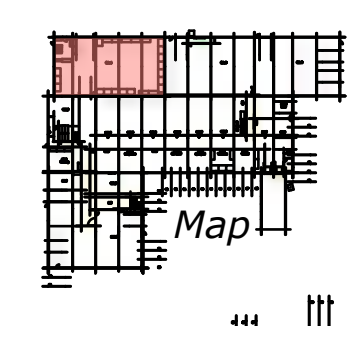
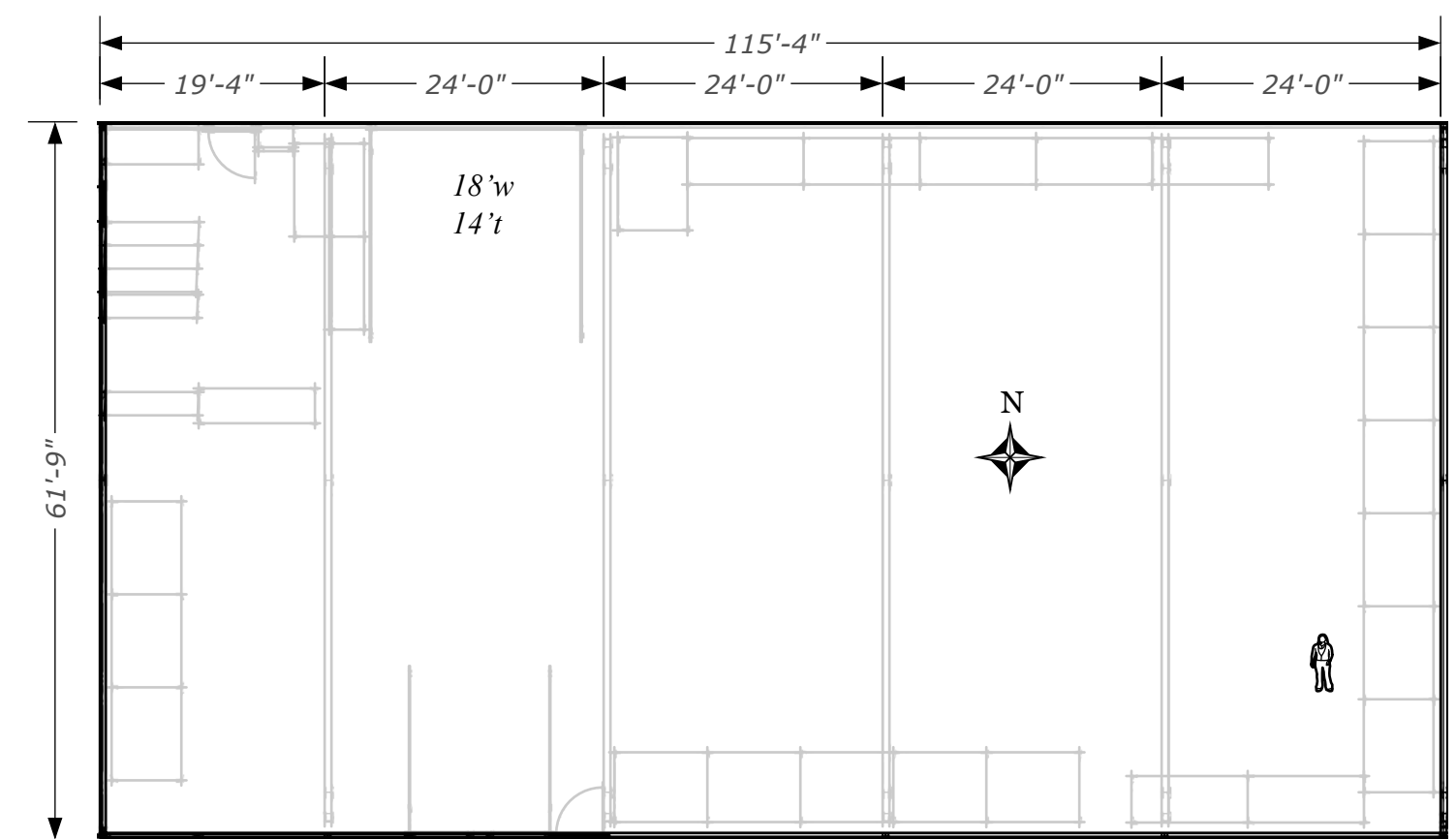
1410 23rd St. S, Moorhead

Total 5,729sf

Drawing Updated 2019-1001



← Concrete Floor →



M.I.G. Properties

CIP6C Shop 4

1410 23rd St. S, Moorhead

Total 7,078sf

Drawing Updated 2019-1001

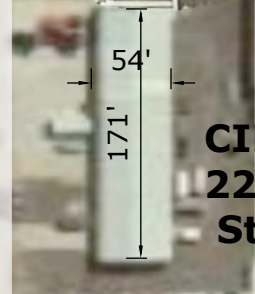
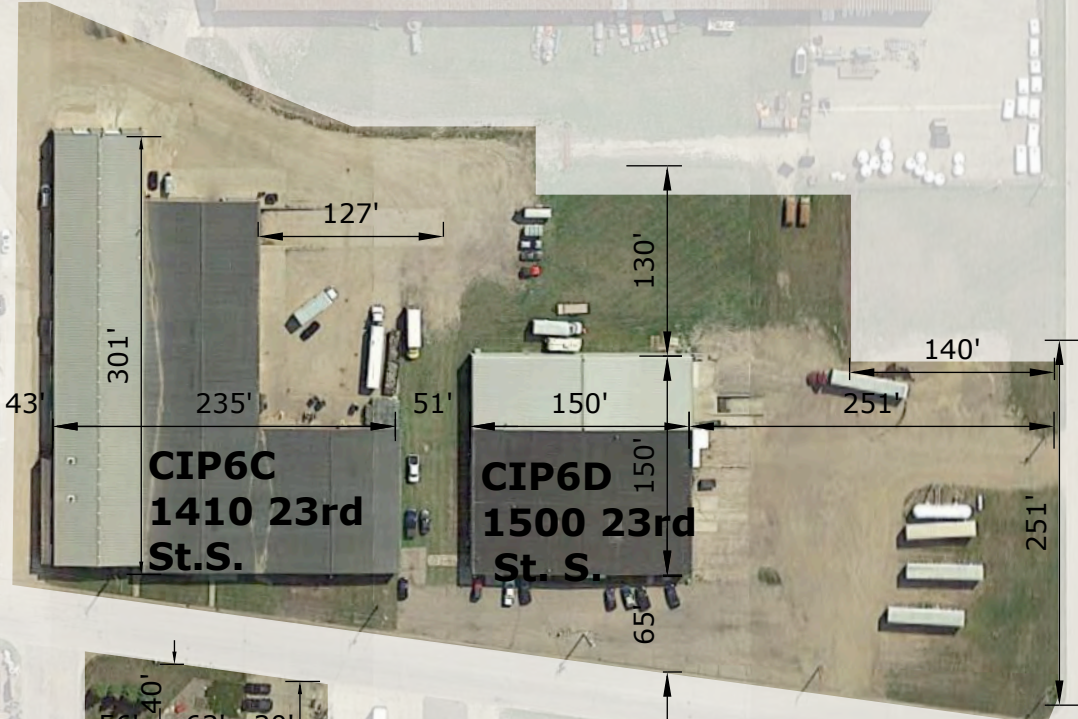
25th St. S.

23rd St. S.

16th Ave S.

14th Ave S.

Industrial Park Complex
Moorhead, MN 56560





Welcome

We can provide storage or services for any business, big or small:

- Cross-dock transfers
- Palletizing
- Freight handling and forwarding
- Containers - loading and unloading
- Labeling
- Packaging
- Shrink wrapping
- Stamping
- Inventory reporting
- Light assembly
- Short or long term storage

We put together orders before the trucks arrive so they are ready to load with very little downtime for drivers. Storage is charged by the day, per item, per pallet, or by the square foot for storing equipment, furniture, vehicles, or anything else you bring in. You only pay storage on what is here at day's end. There is no upfront storage when the load comes in, although there is a one-time load and unload charge.

We rent space as needed and we have full-time attendants that are friendly and experienced to meet all your needs.

Please send orders by e-mail or fax. We do not currently accept orders by phone or in person.

We work through the noon hour, 7:30 AM to 4:30 PM, Monday through Friday.

Security Warehouse & Storage has had and always will have a good working relationship with our customers and drivers. We focus on fast, friendly, and quality service, so give us a call and put us to work for you.

Security Warehouse & Storage, Inc.

1410 23rd St S
Moorhead, MN 56560

Phone: (218) 233-8812
Cell (Ken): (701) 371-4484
Fax: (218) 233-8847

Email: [warehouseandstorage\(at\)migproperties\(dot\)com](mailto:warehouseandstorage(at)migproperties(dot)com)

- FDA Registered
- Agriculture chemicals approved
- Hazardous materials / chemicals
- Sprinkler system
- Pest control

We have the space you need.



About Us

We are a 48,000 square foot building with sprinklers, two off-street loading docks with self-leveling dock plates, two forklifts, a shrink wrap machine, ground level doors, and a computerized inventory ready to do the work for you. We also have internet service and a digital camera, so pictures can be sent to you in minutes.

We have the space you need.



[View Larger Map](#)

Security Warehouse & Storage, Inc.

1410 23rd St S
Moorhead, MN 56560

Phone: (218) 233-8812
Cell (Ken): (701) 371-4484
Fax: (218) 233-8847

Email: [warehouseandstorage\(at\)migproperties\(dot\)com](mailto:warehouseandstorage(at)migproperties(dot)com)

- FDA Registered
- Agriculture chemicals approved
- Hazardous materials / chemicals
- Sprinkler system
- Pest control

We have the space you need.